

Welcome to the Faculty Show & Tell!
Department of Anthropology

Professor Katerina Semendeferi, Director of Undergraduate Studies
Nicole Daneshvar, Undergraduate Academic Advisor

PRESENTERS

Sociocultural:

- John Haviland
- Kathryn Woolard
- Janis Jenkins
- Jonathan Friedman
- David Jordan
- Nancy Postero
- Joseph Hankins
- David Pedersen
- Tom Csordas
- Saiba Varma
- Steve Parish
- Suzanne Brenner

Archaeology:

- Geoffrey Braswell
- Paul Goldstein
- Guillermo Algaze
- Tom Levy

Biological:

- Amy Non
- Margaret Schoeninger
- Shirley Strum
- Katerina Semendeferi
- Marni LaFleur

Anthropology Opportunities:

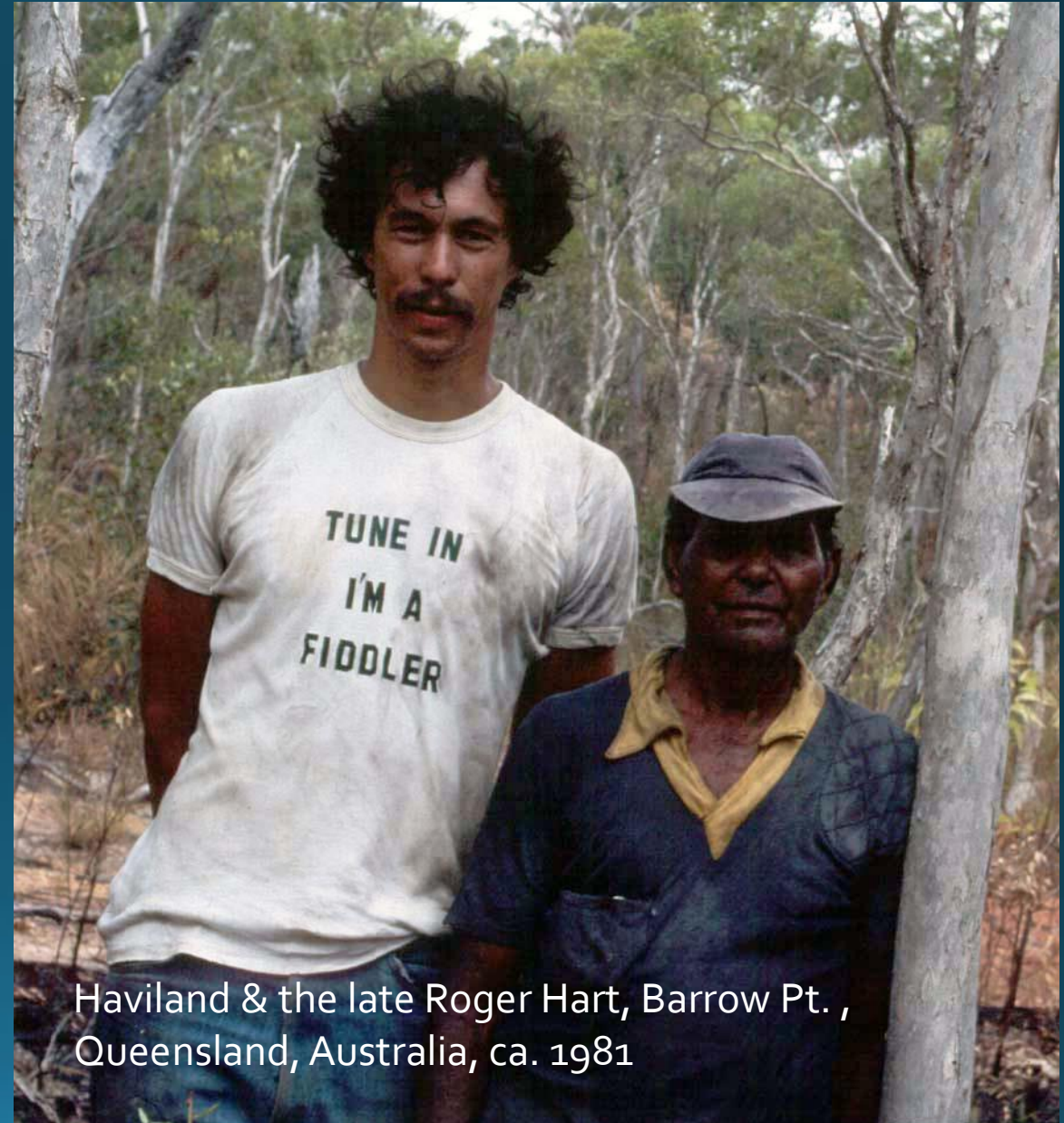
- Kathy Creely-The Library
- Samantha Streuli-Undergrad/Grad Mentorship Program
- Anthropology Club

Sociocultural Anthropology

- John Haviland
- Kathryn Woolard
- Janis Jenkins
- Jonathan Friedman
- David Jordan
- Nancy Postero
- Joseph Hankins
- David Pedersen
- Tom Csordas
- Saiba Varma
- Steve Parish
- Suzanne Brenner

John B. Haviland

- Distinguished Prof.
(Linguistic anthropology)
- Joined UCSD faculty Sept.
2005
- Courses: Lang. & culture,
Gesture, Mayan languages,
Audio visual methods in
ethnography, Language and
law, Discourse



Haviland & the late Roger Hart, Barrow Pt. ,
Queensland, Australia, ca. 1981

current research projects

- Where does language come from? A first generation new/emerging sign language among Mayan speaking Indians in Chiapas, Mexico
- Language and law: the special dilemmas of speakers Tzotzil (and other Mexican & Central American indigenous languages) in US courts, hospitals, schools, and other bureaucracies
- Ownership, identity, and indigeneity: links between knowledge, self, community, and rights (S.E. Mexico, N.E. Australia)
- Interaction: how do human beings coordinate joint collaborative action?

Internship opportunities

- Annotation, transcription, and analysis of multimodal interaction
 - Z
 - gesture
 - courtroom and other legal encounters
 - classrooms, clinics
 - linguistic mediation: interpretation & translation
- Documentation of endangered and underserved language communities
 - spoken languages including those from our own region
 - linguistic and ethnographic fieldwork (esp. in Chiapas, Mexico)

- Melanie McComsey



Haleema Welji



Sara Betancur



Professor Kathryn (Kit) Woolard
UCSD 25+ years:
Sociology, 1989-1998; Anthropology 1998-?

Courses on
the social life of language and
the linguistic life of society

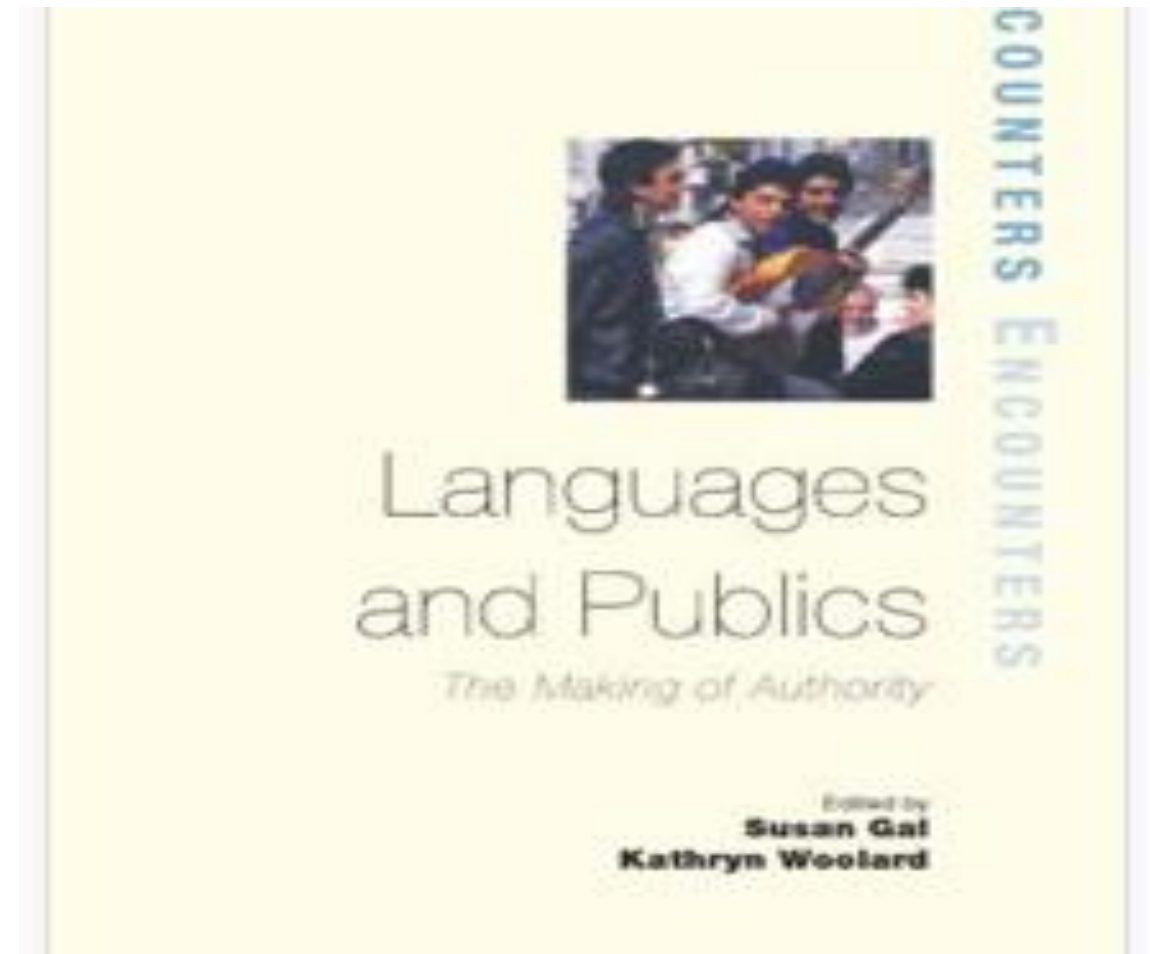


- ANSC 122 Language in Society (W16)
- ANSC 100 Multilingualism in Media and Marketing (W16)
- ANSC 162 Language, Identity and Community (Sp16)
- ANSC 113 Language, Style and Youth Identities

Major research contributions 1

Ideologies of Language

- Ideas about communication that carry social, political, and economic interest
-
- And underpin nation, state, law, morality....



Major research contributions 2

Politics and Economics of Language and Identity

- Bilingualism in Barcelona, 1979-now
- Catalan sovereignty movement...Now!



Extra-curricular opportunities

- Linguistic Anthropology Lab Workshop
 - Events and possible volunteer internship opportunity
- Possible volunteer research opportunities for students with skills in
 - Spanish (and Catalan) reading and writing
 - Digital image and sound editing and archiving

Current graduate students

- Aida Ribot Bencomo
 - Voluntary associations in the re-imagining of a Catalan national community
- Alicia Snyder-Frey
 - The Hawaiian revival movement
- Rachel Hicks
 - Intermarriage, “Halfies”, and language endangerment in the Solomon Islands

Janis H. Jenkins

UCSD Professor of Anthropology



SAMPLE AREAS OF COURSE OFFERINGS:

- ✧ MEDICAL ANTHROPOLOGY
- ✧ PSYCHOLOGICAL ANTHROPOLOGY
- ✧ CULTURE AND EMOTION
- ✧ GLOBAL HEALTH/CULTURAL DIVERSITY
- ✧ ANTHROPOLOGY & MENTAL HEALTH
- ✧ “MAD” FILM (CULTURE & MADNESS)

Academic biography:

Ph.D. in Anthropology, UCLA 1984

Post-Doctoral Training and Instructor, Harvard, 1986-1990

Assistant-Full Professor, Case Western Reserve, 1990-2005

Professor, UCSD, 2006-present

*Anthropology demands the open-mindedness with which
one must look and listen, record in astonishment and
wonder that which one would not have been able to guess.
Margaret Mead*



As of October 1st, 2015, 4:51 pm PST, this is us:



• **WORLD POPULATION: 7,370,936,898**

China: 1,404,151,273

India: 1,286,792,738

United States: 325,783,994

Indonesia: 256,554,306

- ✧ Anthropologists like to think in terms of the full range of Homo sapiens
- ✧ When we do, we see that the one true thing we have in common is diversity
- ✧ Diversity can be observed in a variety of ways, including. . .

Health & Illness: Areas of Research and Training

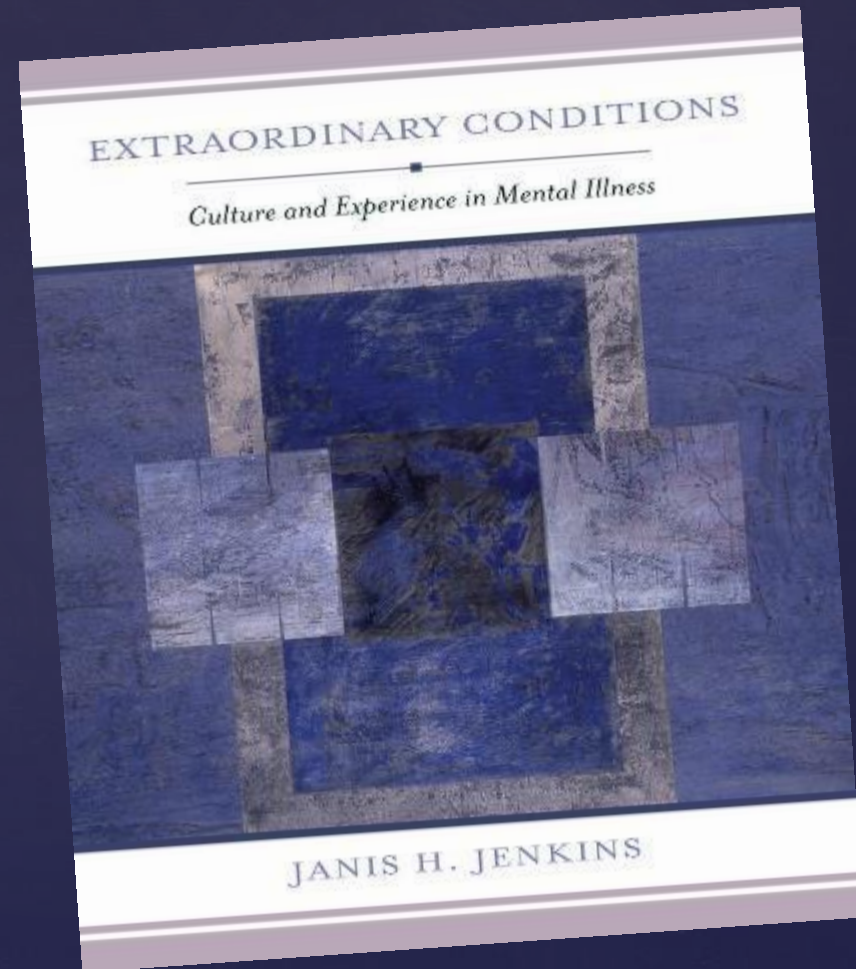
- ✧ **Biology is crucial, but so too are:**
- ✧ **Social, cultural, & psychological contexts of illness and treatment, and**
- ✧ **Ecological features of environments with respect to socioeconomic & political conditions**
- ✧ **For example, take mental health/illness. . .**

Nearly Every Aspect of Mental Illness is Culturally Shaped

- Risk/vulnerability factors
- Type of onset (sudden or gradual)
- Symptom content, form, constellation
- Clinical diagnostic process
- Subjective experience and meaning of problem/illness
- Kin conception of problem/illness & social-emotional response
- Community social response (support, stigma)
- Healing modalities and health care utilization
- Experience, meaning, health care (including medications)
- Resources for resilience and recovery
- Course and outcome

Interdisciplinary Research:

Anthropology, Psychiatry, History,
Psychology, Biology, Global Health





Jonathan Friedman

Distinguished Professor

Since 2007. courses: Global systemic anthropology, crisis, anthropology of the state and its transformations, anthropology of political correctness, anthropology of the "long term", anthropology of social movements, the imaginary the symbolic and the real

Research Interests

- Geographical Areas: Oceania (Hawaii), Southeast Asia, Europe, Central Africa
- Themes: Global systemic anthropology, structuralism and structuralist analysis, ethnicity and multicultural social orders, migration, social movements, the nature of crises, anthropology of political correctness, anthropology of the state and its transformations

For those interested

- As I am also connected the Ecole des Hautes Etudes en Sciences Sociales in Paris where I worked for 14 years and to the Universities of Lund in Sweden and Copenhagen in Denmark where I worked for more than 25 years. I can be of assistance to students who would like to do projects or study in Europe.

Fieldwork Hawaii



Brazzaville scenes and explosion



Sweden

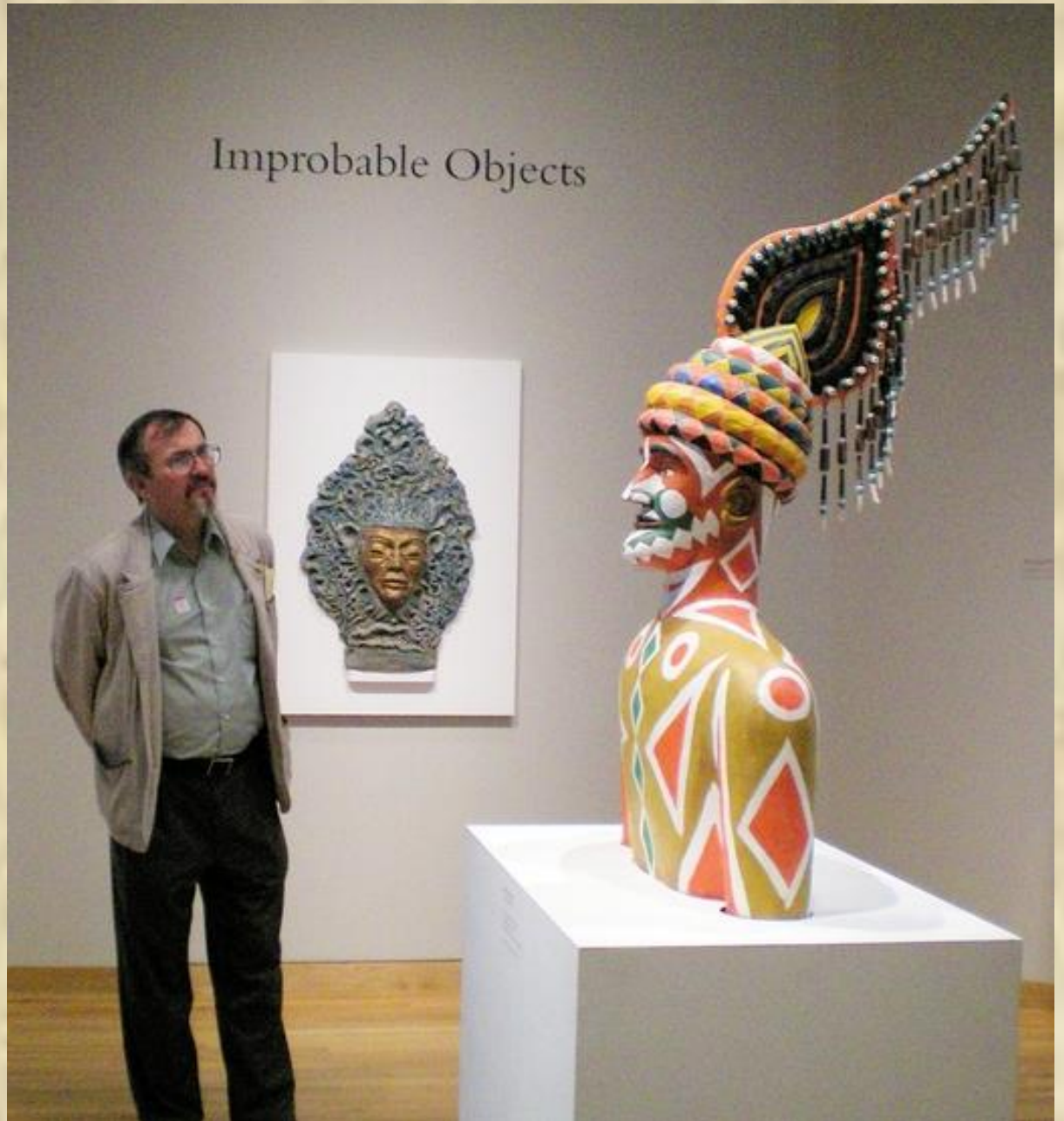


David K. JORDAN

Professor Emeritus

- AB: U. of Chicago (Linguistics)
- MA: Stanford (Anthropology)
- PhD: U. of Chicago (Anthropology)
- At UCSD since 1969

- Various papers & books published (mostly boring)
- Various graduate students directed (mostly brilliant)





Field Research

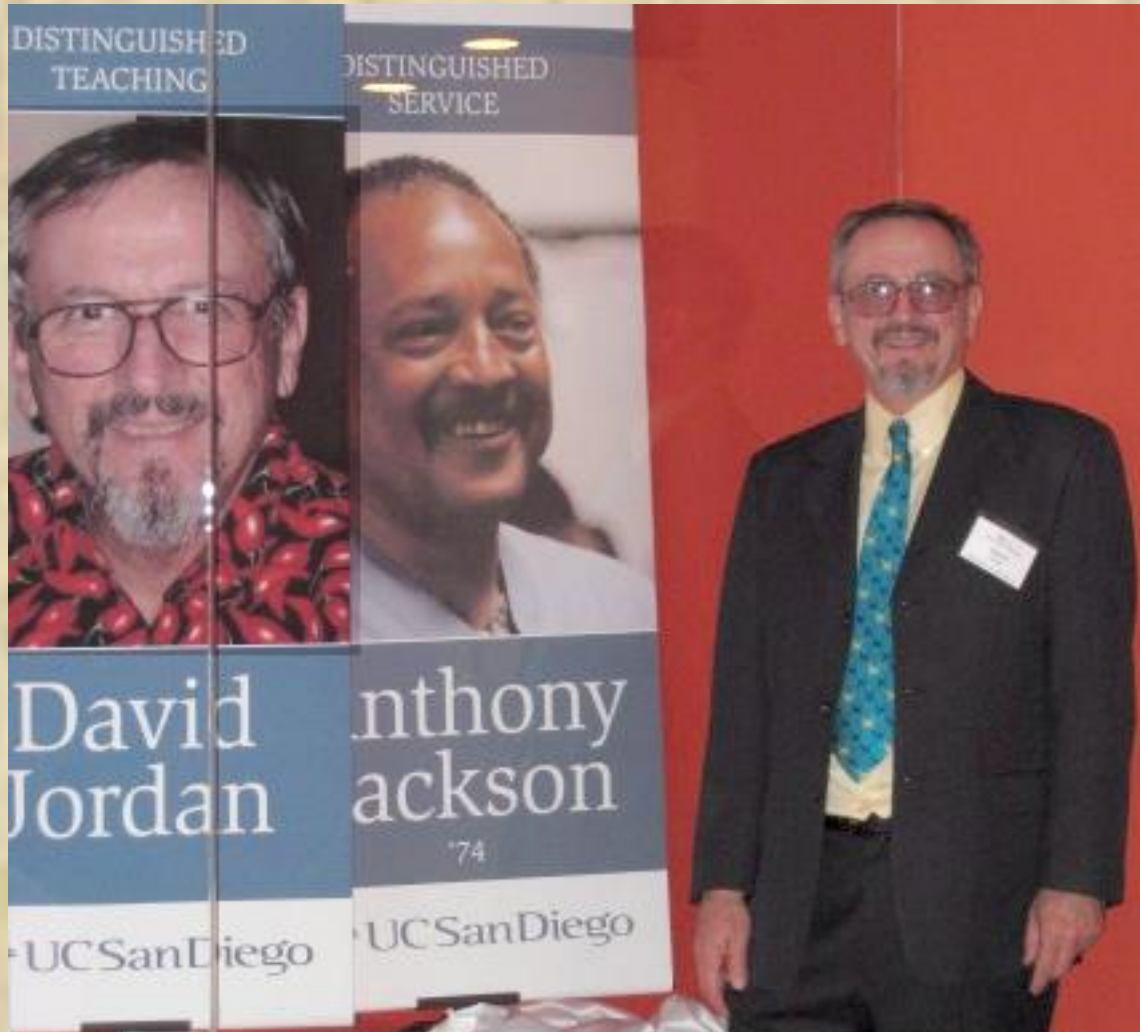
- 60s: Taiwan Village
- 70s: Buddhist Monastery
- 80s: North Taiwan Cult Groups
- 90s: North China Marriage Brokers



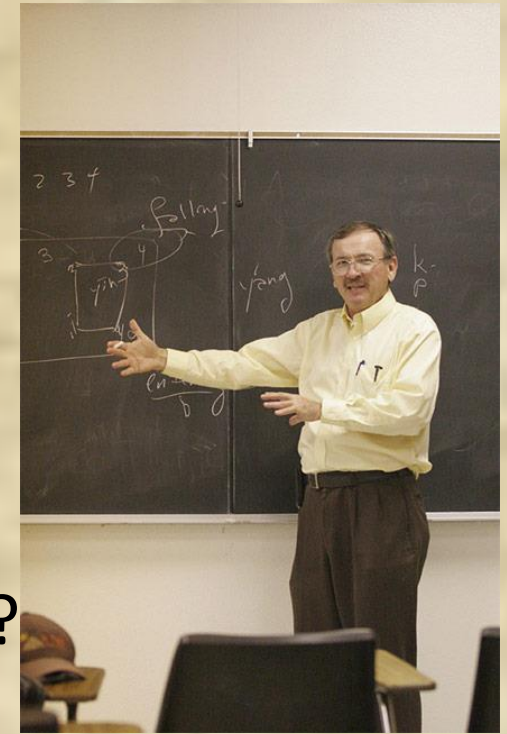
Administrative Years Warren College Provost (1994-2004)



Teaching



- *Kinship & Families*
- *Cultural Anthropology*
- *Archaeology*
- *Linguistic Anthropology*
- MMW (ERC) 1988-2018?
- Freshman Seminars:
Aztecs, Taiwan,
Chinese Stories, Earliest China
- Ethnography of Christianity (226)
- Traditional Chinese Society (136)
- Chinese Popular Religion (137)



Retirement & Webby Stuff (dkjordan.net)

Popular Chinese Stories

Retold by DKJ

An Imperial Visit to Hell

Quick Essays on Social Theory

Overviews for College Students

The Traditional Chinese Family & Lineage

Homo neanderthalensis

PART TWO: Nicholas Becomes Bishop of Myra



The Death of Quetzalcōātl

Anales de Cuahtitlan (Codex Chimalpopoca, sections 5 to 8)



The Story of Rama & Sita (The Ramayana)

An Extremely Brief Synopsis

Dramatis Personae

- King Dasaratha (दशरथ) = King of the realm of Ayodhya (near Faizabad in modern Uttar Pradesh) in about 1000 BC
- King Dasaratha's rather uninteresting first wife Kaikeyi (कौसल्या) = King Dasaratha's second wife and his

Nancy Postero

Associate Professor

- At UCSD since 2001
- Previous jobs: Human rights lawyer and radio journalist
- Director of UCSD's Human Rights Program
- Teach in International Studies, Human Rights, and Anthropology:
- INTL 101; Anthropology of Indigenous Peoples; Anthropology of Latin America; and Contemporary Human Rights



Indigenous People and Politics in Bolivia



- How do we think about difference? How does race and ethnicity contribute to social inequality? What does it mean to be “indigenous” in today’s world?
- How do societies manage difference? Can liberal democratic processes overcome long term forms of exclusion? What are the limits of these efforts?
- Bolivia’s 2005 “indigenous revolution” seen as an inspiration for poor and oppressed around the world. What can the experiences of indigenous people in Bolivia tell us about:
 - The continuing legacies of racism?
 - Alternatives to dominant visions of development based on capitalism?
 - The role of civil society in transforming society?
 - The meanings of citizenship and human rights?

The Human rights program at UCSD

- Human rights minor: 2 core classes (History and Anthropology) and x electives
- Opportunities for Anthro/human rights undergrads to work with the Center for Global Justice's Blum summer internship program in the Tijuana border area



My wonderful grad students!!!!



Amy Kennemore- Bolivia

Missing photos: Ninna
Villavicencio:
Guatemala,
Alexia Arani – Peru,
Chile



Raquel Pacheco- Mexico



Amy Rothschild-Timor



Whitney Russell-
India

Leanne Williams- PNG



Belinda Ramirez- Ecuador



Natasa Garic-Humphrey-Bosnia Herzegovina

Maddie Boots- Chile

Joseph Hankins

Associate Professor of Sociocultural Anthropology

Hired at UCSD in 2009

PhD from the University of Chicago in 2009



Joseph Hankins



My research focuses on the politics of stigmatized labor in Japan. How do unrecognized minorities in Japan make themselves visible?

I teach introduction to sociocultural anthropology for majors, as well as courses on race and racism, gender and labor, and the role of sympathy in liberal governance.

Joseph Hankins

A photograph of a tannery. Numerous animal skins, likely from deer or similar animals, are hanging from a wooden rack. The skins are in various stages of processing, with some appearing as raw hides and others as partially tanned. The lighting is somewhat dim, with a few bright spots from overhead lights. The overall atmosphere is industrial and historical.

Our program at UCSD offers excellent instruction in how to study and understand political movements.

What are human rights? We all talk about “the public” – what is that collective entity, what can it do, where did it come from? How do politics and economics affect each other?

Joseph Hankins

We also offer excellent instruction in ethnography. In classes as well as in one-on-one mentoring, we can help you design and conduct ethnographic projects related to pressing questions of today – the environment, race relations, urban and rural relations, and more.

These experiences make abstract readings concrete and relatable and offer preparation for jobs related to anthropology.



Joseph Hankins

I work with a number of graduate students whose projects focus on such topics as social movements and compassion in Japan, tobacco production and prohibition in India, the politics of indigeneity in Bolivia, the uses of social media in social movements – and more!





I am David Pedersen, an associate professor in the UCSD anthropology department. I have been here about a decade and teach courses on the intersection of anthropology and history (I have a joint degree in both disciplines), capitalism, militarism, and migration in the hemisphere of the Americas.

I have conducted several years of research in El Salvador and among Salvadorans who live and work in the greater Washington, DC area. I now am exploring an odd but compelling question: How is life in both countries shaped by the development of a remarkably symbiotic relationship between the US Bond Market and the U.S. Military. Stay tuned for the answer!

- Although anthropologists typically have focused on studying distinct groups of people in the 'non-west,' many of us now use the theories and methods of anthropology to look at complex social processes that are developing across multiple locales in more than one nation-state. By moving across time and space in this way, we are able to understand not only the way that people are shaped according to dominant logics and tendencies, but also the ways that people modify and change such structures, even ones operating at very large scales. We believe that this approach to anthropology is excellent preparation for any student who wishes to take on the complex and difficult challenges that are confronting diverse populations worldwide.

- In several of my courses I have helped advanced students conduct ethnographic research among some of the migrant and refugee populations in the region. These students went on to careers in law, politics and public health, especially focused on migrant and refugee issues.
- I continue this practice in my current courses and have expanded the research possibilities to include inquiry into local fishing and water pollution, the diverse practices of the US military in the region, and the way that banks in San Diego help migrants transfer money to family and friends in their home country.

- I hope that you have a chance to meet Marisa Peeters, an advanced anthropology graduate student here at UCSD who has conducted extensive ethnographic field research in El Salvador.
- You also should get to know Vanessa Lodermeier. She is a graduate student in our department who is developing a fascinating research project right here in the greater San Diego-Tijuana area.

Thomas J. Csordas, Ph.D.

Professor of Anthropology



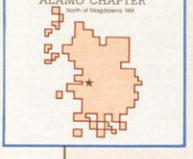
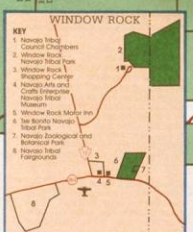
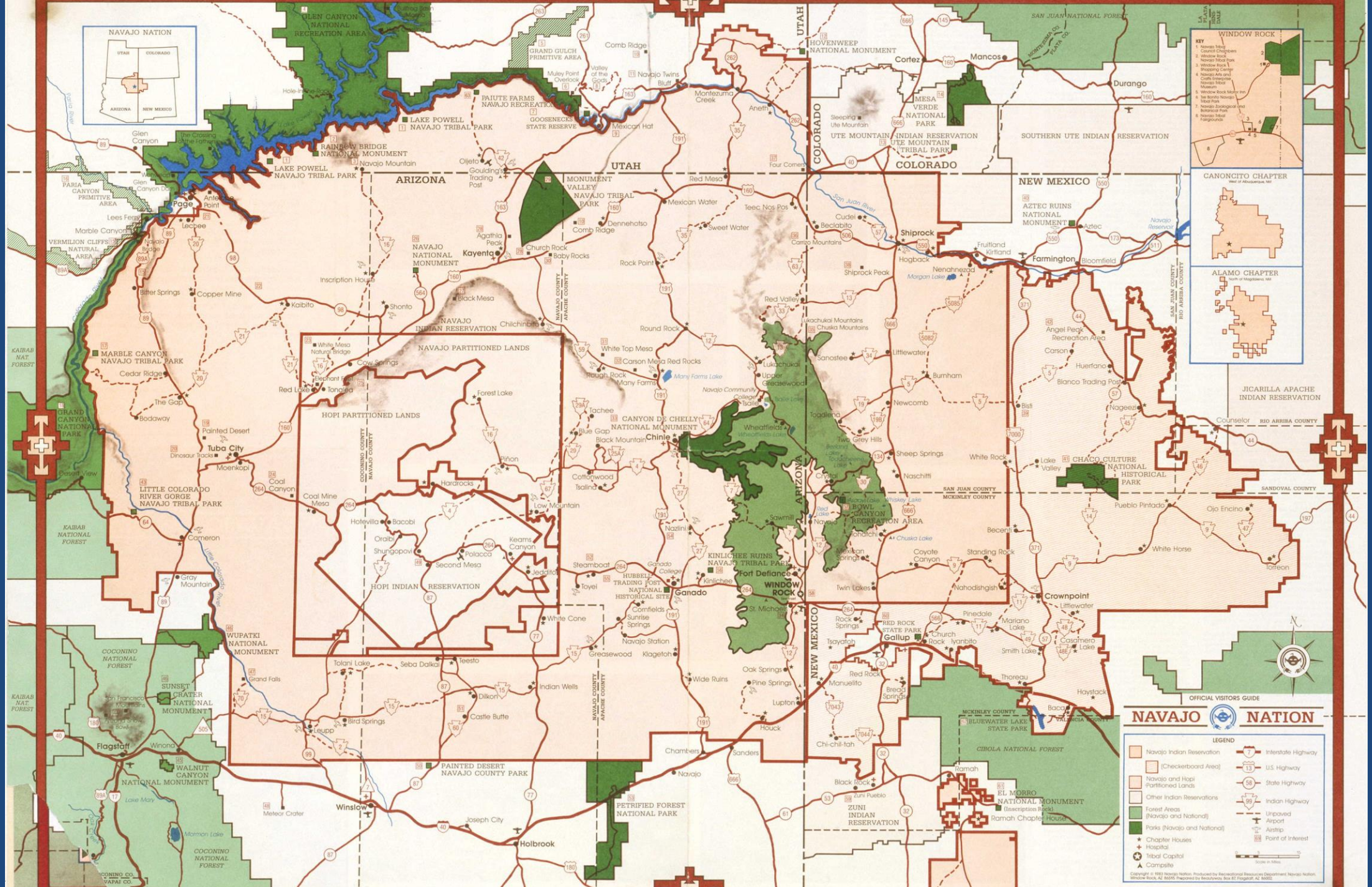
Courses

Meaning and Healing

Global Health

Anthropology of Religion

Native American Peoples and Cultures



JICARILLA APACHE INDIAN RESERVATION

SANDOVAL COUNTY

CHACO CULTURE NATIONAL HISTORICAL PARK

WUPATKI NATIONAL MONUMENT

PAINTED DESERT NAVALO COUNTY PARK

PETRIFFED FOREST NATIONAL PARK

EL MORRO NATIONAL MONUMENT

NAVajo NATION

OFFICIAL VISITORS GUIDE

LEGEND	
	Navajo Indian Reservation
	(Checkboard Area)
	Navajo and Hopi Partitioned Lands
	Other Indian Reservations
	Forest Areas (Navajo and National)
	Parks (Navajo and National)
	Chapter Houses
	Hospital
	Tribal Capital
	Campsite
	Interstate Highway
	U.S. Highway
	State Highway
	Indian Highway
	Unpaved Road
	Airport
	Airstrip
	Point of Interest

Scale in Miles

Copyright © 1993 Navajo Nation. Produced by Recreational Resources Department, Navajo Nation, Window Rock, AZ 86515. Prepared by Geology, Inc. 87 Flagstaff, AZ 86002.



DINÉ BI KÉYAH  **THE NAVAJO WORLD**

"Shinaagóh T'áa' Altsq Hózhóqgoh Naa Sháadoh" "With Beauty All Around Me, I Walk"

© 1992 ANCIENT WAYS

Hogan - Traditional



Tent Revival - Christian



Tipi - NAC



Saiba Varma

- Assistant Professor of Anthropology and Global Health
- New to UCSD!
- Teaching global health and cultural diversity (ANSC 148)
- In the future: humanitarian aid, violence, war and instability, on anthropological fieldwork and writing, and South Asian studies

My research site







Anthropology at UCSD

- Rapidly growing global health major
- One of the best faculty in medical and psychological anthropology in the US
- Ability to combine anthropology with pre-med and other majors – MD/PhD programs
- Anthropology, esp. medical anthropology, increasingly attractive to medical schools

Steve Parish, Professor (On Sabbatical)

He has received his Ph.D. in Anthropology from UCSD, where he was trained in psychological anthropology. He has conducted fieldwork in Nepal and in the United States.

His major interests are cultural, medical, and psychological anthropology, social theory, religion, the self and subjectivity, global health and the subjectivity of suffering, climate change and its consequences for society and human values.

His research has addressed a number of topics in psychological anthropology, with a central focus on the study of self, emotion, and moral experience. In the anthropology of religion and South Asian studies, his scholarly interests include Hinduism, Buddhism, and the role of ritual in selfhood and social life.



Suzanne Brenner, Associate Professor (On Sabbatical)

She received her PhD from Cornell University and specializes in the study of gender, family, and social transformation.

Her recent work focuses in particular on the intersections of gender, religion, and politics in Indonesia and the United States. She has studied the Islamic movement in Indonesia, looking especially at women's involvement in the movement, and how issues of gender, religion, and morality have become focal points of Indonesia's contemporary social and political changes and tensions.

Her most recent research, based in the U.S., explores evangelical Protestant views of marriage and morality and the cultural and religious rifts over the issue of same-sex marriage.

